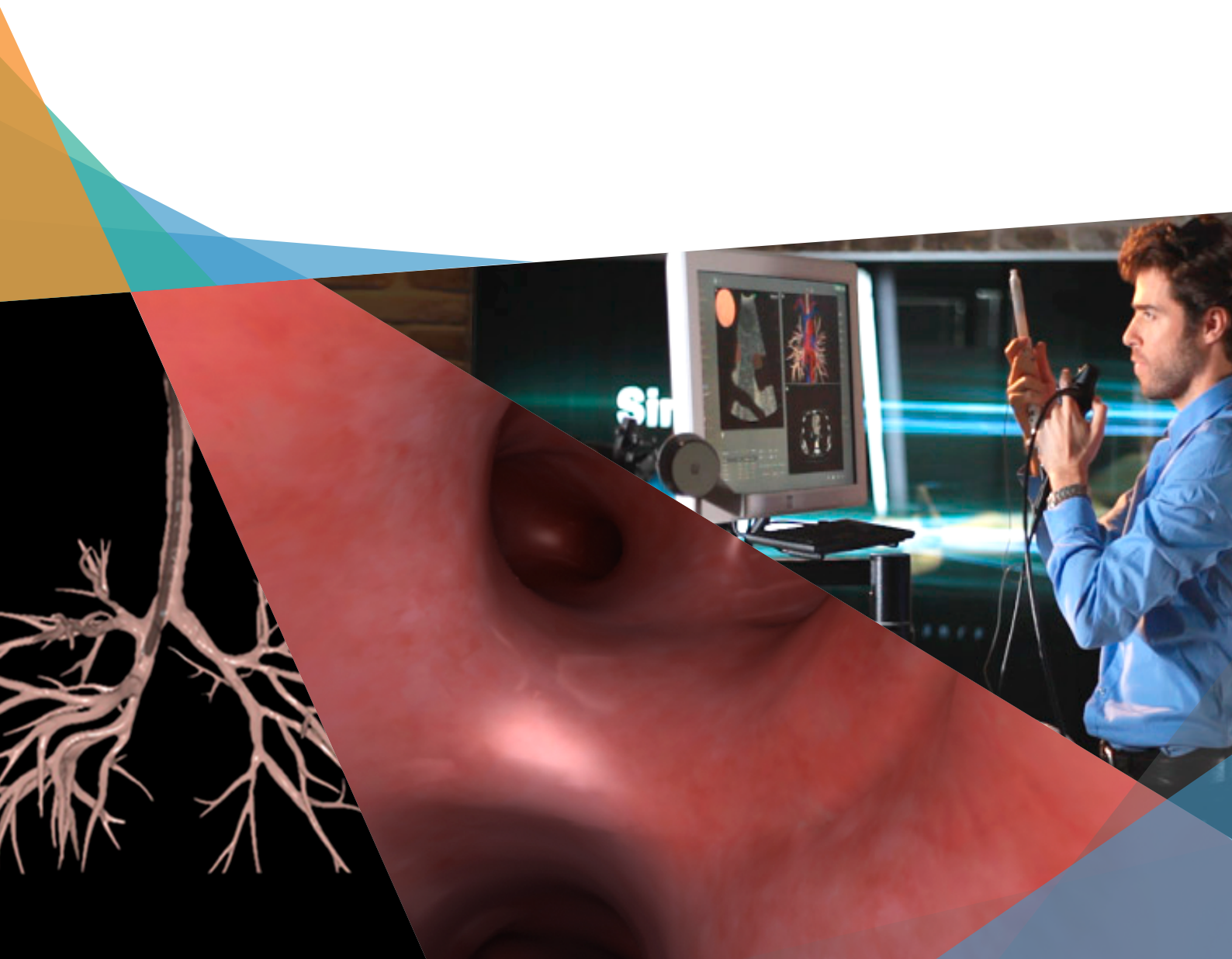




BRONCH Mentor™





BRONCH Mentor

A true-to-life training environment using an authentic scope with tactile feedback, and realistic visualization displayed on a 24" touch screen. The flexible system configuration supports either lateral or posterior working positions for team or solo training.

The GI-BRONCH Mentor platform offers the most comprehensive bronchoscopy hands-on training available, as well as optional add-on modules for GI Endoscopy.

BRONCH Express - co-developed with CHEST (ACCP)

This innovative portable simulator provides a meaningful yet affordable hands-on solution to the growing demand for training and qualification for core bronchoscopy skills and procedures.



BRONCH Mentor

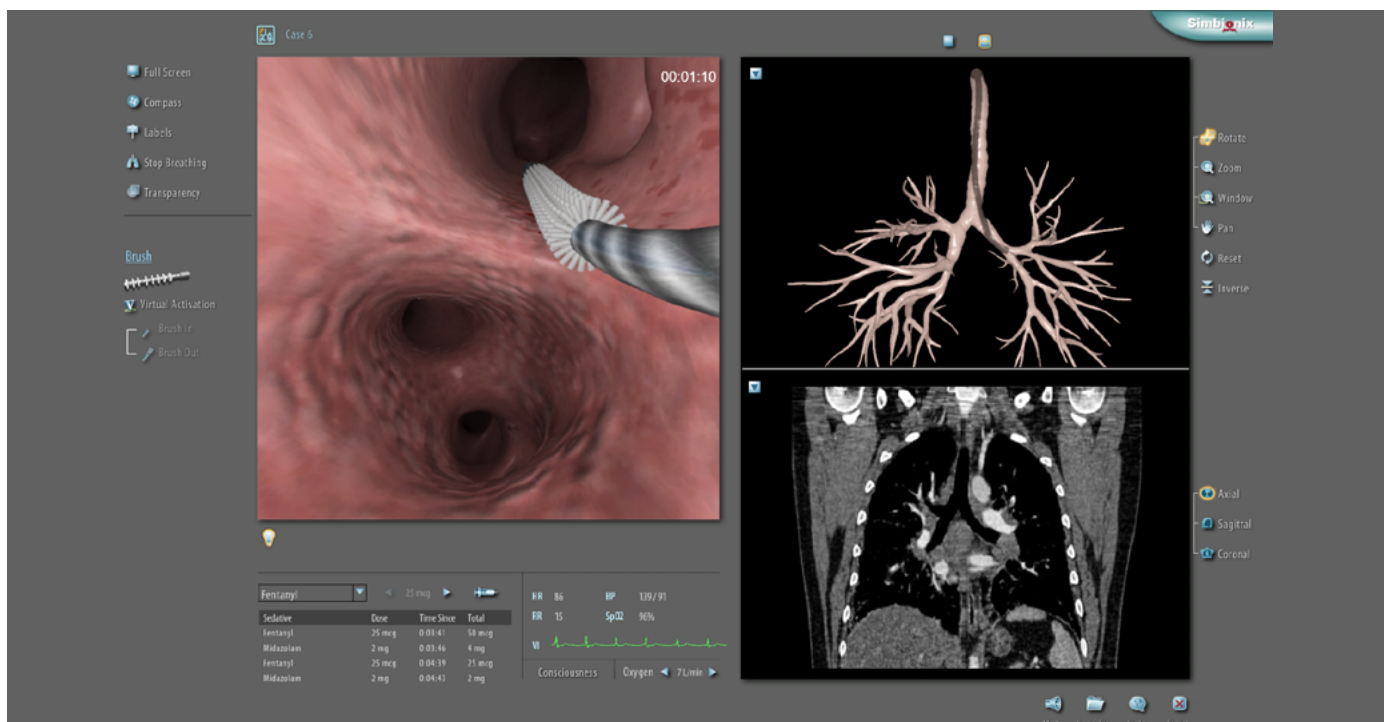


BRONCH Express

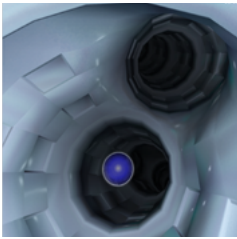
The BRONCH Mentor™ provides the optimal learning environment for bronchoscopic skills acquisition and clinical procedure practice.

Features and Benefits

- Realistic simulation featuring authentic scope, tactile feedback and a flexible working setup promoting team training.
- True to life virtual patient cases modeled after real patients.
- Comprehensive patient environment includes sedation, topical anesthesia, reactive vital signs, cough and complications.
- Unique educational environment enhances 3D perception, anatomical knowledge, procedural know-how and patient safety.
- Training and assessment are designed to foster safe and efficient performance while considering patient safety, procedural adequacy, clinical discretion, diagnostic yield and equipment safety.
- Meaningful performance metrics for self-assessment and competence demonstration prior to real patient practice.



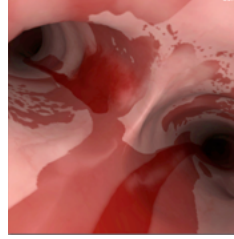
BRONCH Mentor Modules



ESSENTIAL BRONCHOSCOPY

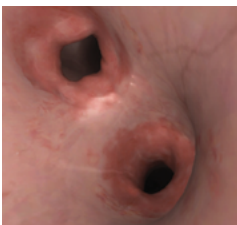
Designated essential skill tasks to optimize novice users learning curve while acquiring and integrating bronchoscopic capabilities.

Developed in conjunction with and endorsed by the American Association for Bronchoscopy and Interventional Pulmonology (AABIP).



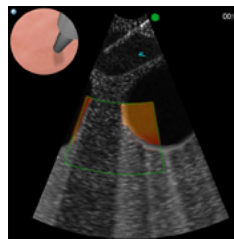
EMERGENCY BRONCHOSCOPY

Emergency and ICU situations that require bronchoscopic intervention such as foreign body aspiration, endobronchial bleeding and secretion filled airways.



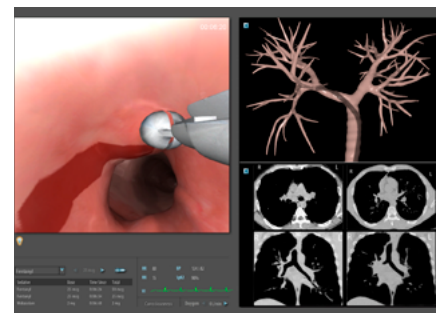
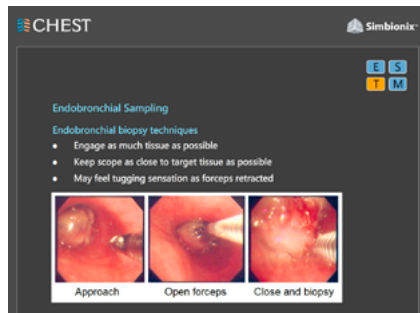
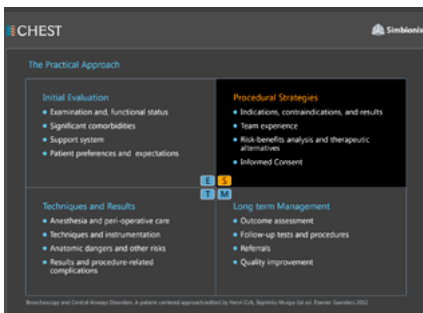
DIAGNOSTIC BRONCHOSCOPY

Virtual patient cases requiring diagnostic bronchoscopies, including airway inspection and various endobronchial transbronchial tissue sampling methods.



ESSENTIAL EBUS

Tasks and complete clinical cases to enhance ultrasound image interpretation, anatomical structures recognition, and procedural performance of the complete EBUS-TBNA workflow.

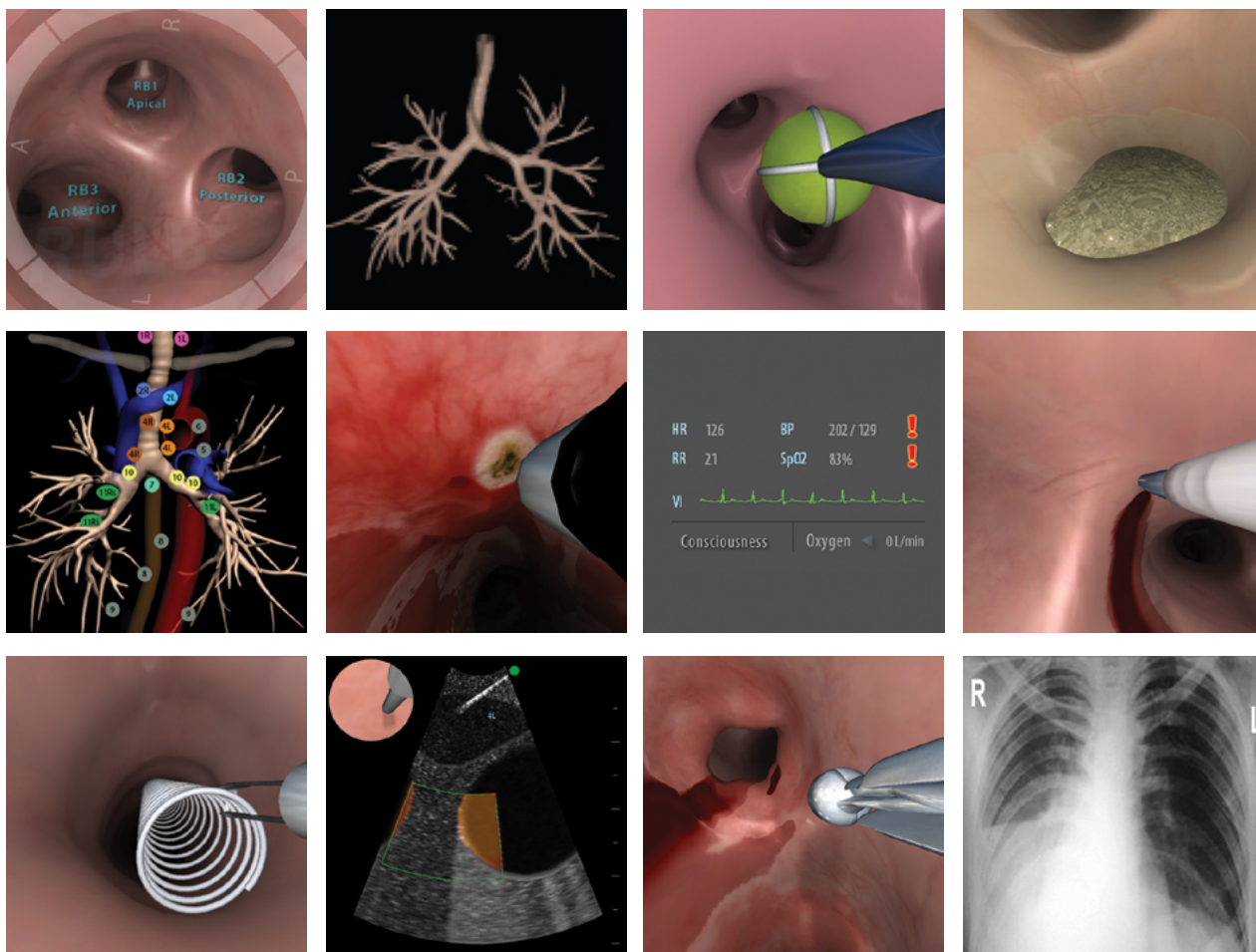


The CHEST standardized curriculum for essential bronchoscopic skills and diagnostic bronchoscopy:

The CHEST Standardized Curriculum for the BRONCH Mentor is a unique training module developed with The American College of Chest Physicians (CHEST). Cognitive knowledge and clinical decision making ability are seamlessly combined with hands-on practice, to be challenged and assessed as one continuous workflow.

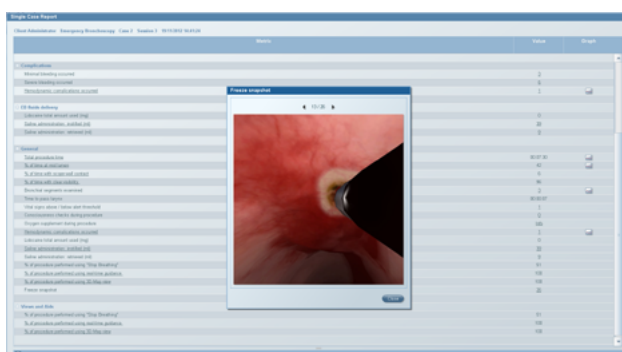
A CHEST Certificate of Completion will be available upon meeting the qualification criteria.

The BRONCH Mentor offers the most realistic hands-on training for the widest range of bronchoscopic procedures.



MentorLearn Simulator Curricula Management System

3D SYSTEMS' MULTIDISCIPLINARY SIMULATORS EFFORTLESSLY INTEGRATE INTO YOUR PROGRAM CURRICULUM



- Customizable curriculum incorporating training and didactics.
- Easy and efficient administration of simulator users.
- Online learning courses and video-based content.
- Proficiency based hands-on training.
- Performance reports with learning curve graphs.
- Recorded videos of the simulation sessions for debriefing.



"Using the BRONCH Mentor and the BRONCH Express in our facility has enabled our trainees to rapidly acquire and adopt safe and efficient bronchoscopy habits. The use of the simulation software facilitates a deeper understanding of anatomic relationships in a low stakes environment that is very conducive to learning.

With comprehensive hands-on training using a graduated curriculum, deliberate practice and objective performance metrics, the path to proficiency is a carefully monitored one, and our patients have to carry less of the burden of the procedural learning curve."

George A. Eapen, MD, FACP, FCCP, Professor of Medicine
Section Chief, Interventional Pulmonology
Program Director, Interventional Pulmonology Fellowship Program
Department of Pulmonary Medicine
MD Anderson Cancer Center



"The GI-BRONCH Mentor is absolutely vital to our simulation curriculum. Practicing on the simulator gives the residents and medical students a lot of confidence going into the actual tests. We chose the GI-BRONCH Mentor as it has the widest array of interesting cases in addition to ample teaching modules to enhance skills training."

Dr. Michael Ujiki
Director, Simulation Lab
NorthShore University HealthSystem
Chicago, IL

Healthcare Solutions

3D Systems is a pioneer for healthcare solutions that improve outcomes which benefit both patients and surgeons. Our global team works with customers to help navigate technologies and provide support for surgical planning, training, device design, personalized medical technologies and 3D printing. We are dedicated to helping medical professionals train for, plan and practice complex medical procedures.

©2017 by 3D Systems, Inc. All rights reserved. Specifications subject to change without notice.
3D Systems is a registered trademark and the 3D Systems logo is a trademark of 3D Systems.



3D Systems Corporation

5381 South Alkire Circle
Littleton, CO 80127 USA
Tel +1-720-643-1001
healthcare@3dsystems.com

Grauwmeer 14, Leuven
Belgium
Tel +32-1694-6400
info.leuven@3dsystems.com

3 Golan Street (Golan Building)
Airport City, 7019900 Israel
Tel +972-3-911-4444
healthcare@3dsystems.com

www.3dsystems.com/healthcare | www.simbionix.com